



COVID-19

GOVERNMENT OF BARBADOS

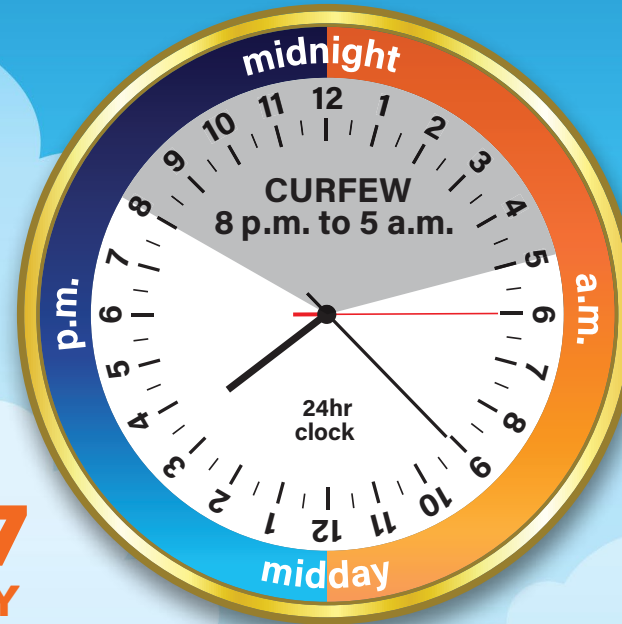
EMERGENCY MANAGEMENT
(COVID-19) ORDER, 2020

DIRECTIVE 4 PHASE 2 | MAY 4 - 17

CURFEW: 8:00 P.M. TO 5:00 A.M. DAILY

New Movement Information

30/04/2020





CONTENTS

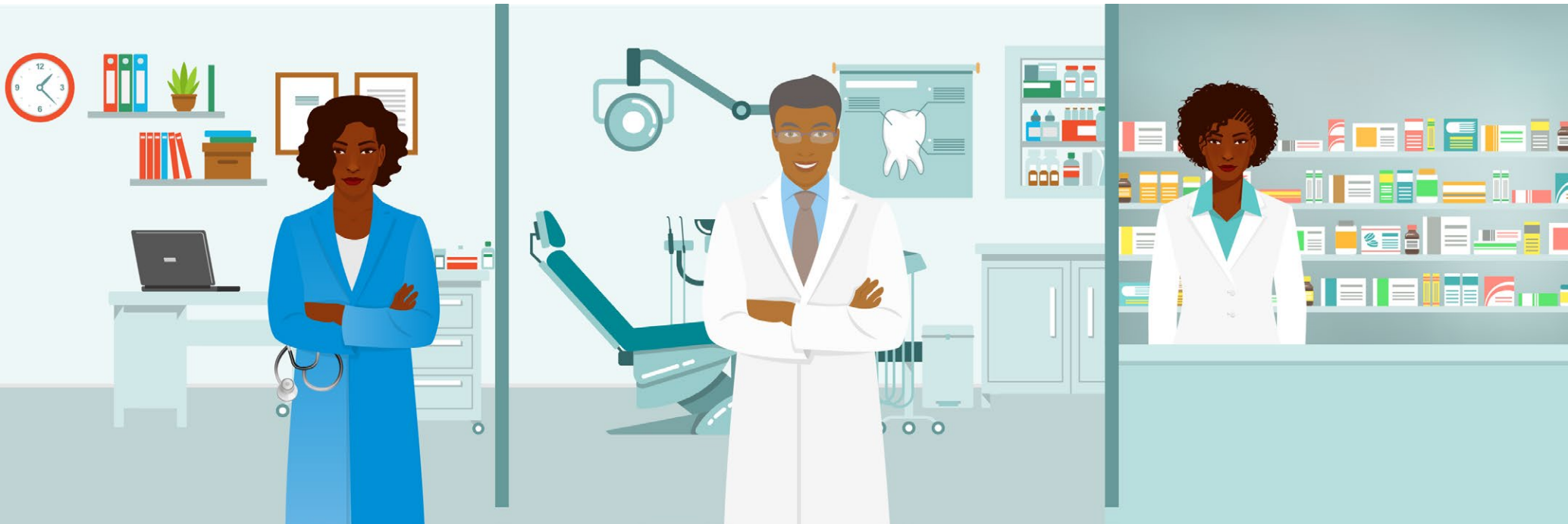
Approved Places You May Go Irrespective of the Alphabet System	3
The Alphabet System	4
Assigned Day & Time: Banks & Credit Unions	5
Assigned Day & Time: Public Markets Fish Markets	
Hardware Stores & Retail Operators	6
Assigned Day & Time: Supermarkets & Mini Marts	7
Non-Essential Services	8
Essential Services	20
Places of Religious Worship	22
Beaches	23
Exercise	24
Public Transportation	25
Sale of Alcohol	26
Standard Rules For Everyone	27
Rules: General Public	28
Rules: Essential Services	29
Rules: Businesses & Service Providers	30
Penalty	31



APPROVED PLACES YOU MAY GO IRRESPECTIVE OF THE ALPHABET SYSTEM

(See Clause 16 & Schedule)

- To purchase medical and pharmaceutical supplies and to have a prescription filled
- To seek medical, dental or ophthalmic attention
- To work in, or transact business with, an essential service or a business that is exempt from this directive.





THE ALPHABET SYSTEM

(See Clause 17 & Schedule)

- The first letter of your surname associated with the assigned days to leave your residence still apply.
- The assigned days and alphabet system apply to every person.

IF YOU NEED TO GO TO ANY OF THESE PLACES:

- Bank
- Credit Union
- Public Market (for fruit, vegetables, fish and meat)
- Fish Market
- Hardware Store
- Retail Operator
- Supermarket
- Mini mart

You will need to go on your assigned day during the assigned time period.

This does not apply to village shops, the purchase of inputs for construction projects or pharmacies.





ASSIGNED DAY & TIME: BANKS & CREDIT UNIONS

(See Clauses 2, 17 & Schedule)

MONDAY	TUESDAY	WEDNESDAY	THURSDAY	FRIDAY
9 am - 1 pm	9 am - 1 pm	9 am - 1 pm	9 am - 1 pm	9 am - 1 pm
A - B	SENIORS & DISABLED	C - D - E - F	G - H - I - J - K	L - M - N - O P - Q - R
1 pm - 4 pm	1 pm - 4 pm	1 pm - 4 pm	1 pm - 4 pm	1 pm - 4 pm
		S - T - U - V W - X - Y - Z	HEALTH CARE & OTHER ESSENTIAL WORKERS	

- All businesses shall follow strict distancing protocols for staff and customers;
- All businesses shall restrict the number of persons within or outside that establishment at any one time in order to ensure that a distance of at least 6 feet is maintained between every person and also ensure that persons do not assemble otherwise than for the purpose of transacting business;
- Any owner or operator who contravenes the above, is liable to have his exemption revoked.



ASSIGNED DAY & TIME:

PUBLIC MARKETS | FISH MARKETS | HARDWARE STORES & RETAIL OPERATORS

(See Clauses 2, 17 & Schedule)

MONDAY	TUESDAY	WEDNESDAY	THURSDAY	FRIDAY	SATURDAY	SUNDAY
8 am - 11 am	8 am - 11 am	8 am - 11 am	8 am - 11 am	8 am - 11 am	8 am - 11 am	8 am - 11 am
A - B	SENIORS & DISABLED	C - D - E - F	G - H - I - J - K	L - M - N - O P - Q - R	S - T - U - V W - X - Y - Z	SENIORS & DISABLED
1 pm - closing time	1 pm - closing time	1 pm - closing time	1 pm - closing time	1 pm - closing time	1 pm - closing time	11 am - 2 pm
G - H - I - J - K	L - M - N - O P - Q - R	S - T - U - V W - X - Y - Z	HEALTH CARE & OTHER ESSENTIAL WORKERS	A - B	C - D - E - F	HEALTH CARE & OTHER ESSENTIAL WORKERS

- All businesses shall follow strict distancing protocols for staff and customers;
- All businesses shall restrict the number of persons within or outside that establishment at any one time in order to ensure that a distance of at least 6 feet is maintained between every person and also ensure that persons do not assemble otherwise than for the purpose of transacting business;
- Any owner or operator who contravenes the above, is liable to have his exemption revoked.



ASSIGNED DAY & TIME: SUPERMARKETS & MINI MARTS

(See Clauses 2, 17 & Schedule)

MONDAY	TUESDAY	WEDNESDAY	THURSDAY	FRIDAY	SATURDAY	SUNDAY
7 am - 11 am	7 am - 11 am	7 am - 11 am	7 am - 11 am	7 am - 12 noon	7 am - 11 am	7 am - 11 am
A - B	SENIORS & DISABLED	C - D - E - F	G - H - I - J - K	L - M - N - O P - Q - R	S - T - U - V W - X - Y - Z	SENIORS & DISABLED
1 pm - closing time	12 noon - closing time	1 pm - closing time	1 pm - closing time	1 pm - closing time	1 pm - closing time	1 pm - closing time
G - H - I - J - K	L - M - N - O P - Q - R	S - T - U - V W - X - Y - Z	HEALTH CARE & OTHER ESSENTIAL WORKERS	A - B	C - D - E - F	HEALTH CARE & OTHER ESSENTIAL WORKERS

- All businesses shall follow strict distancing protocols for staff and customers;
- All businesses shall restrict the number of persons within or outside that establishment at any one time in order to ensure that a distance of at least 6 feet is maintained between every person and also ensure that persons do not assemble otherwise than for the purpose of transacting business;
- Any owner or operator who contravenes the above, is liable to have his exemption revoked.



NON-ESSENTIAL SERVICES

(See Clause 2)

- Access to these non-essential services is permitted using the assigned days and times.
- The approved hours of operation are not to be mistaken as the approved hours to access these services.
- Residents are still required to observe the assigned days and time periods to leave their homes.
- All businesses shall follow strict distancing protocols for staff and customers;
- All businesses shall restrict the number of persons within or outside that establishment at any one time in order to ensure that a distance of at least 6 feet is maintained between every person and also ensure that persons do not assemble otherwise than for the purpose of transacting business;
- Any owner or operator who contravenes the above, is liable to have his exemption revoked.
- The following pages are a list of approved non-essential services that may operate and their approved hours of operation.



TYPE OF NON-ESSENTIAL SERVICE APPROVED TO OPERATE	APPROVED HOURS OF OPERATION	IMPORTANT NOTES
Automarts	6am to 6pm	No prepared food items shall be sold
Automotive Store and Workshops	8am to 4pm	Vehicle repair, servicing, sale of spare parts for motor vehicles, motorcycles, and bicycles
Bakeries and Bread Depots	8am to 6pm	For sale of bread
Bakeries	6am to 6pm	For baking of bread



- All businesses shall follow strict distancing protocols for staff and customers;
- All businesses shall restrict the number of persons within or outside that establishment at any one time in order to ensure that a distance of at least 6 feet is maintained between every person and also ensure that persons do not assemble otherwise than for the purpose of transacting business;
- Any owner or operator who contravenes the above, is liable to have his exemption revoked.



TYPE OF NON-ESSENTIAL SERVICE APPROVED TO OPERATE	APPROVED HOURS OF OPERATION	IMPORTANT NOTES
<p>Banks and Credit Unions</p> <p>Mon., Tues., Fri. Wed., Thurs.</p> <ul style="list-style-type: none">• All businesses shall follow strict distancing protocols for staff and customers;• All businesses shall restrict the number of persons within or outside that establishment at any one time in order to ensure that a distance of at least 6 feet is maintained between every person and also ensure that persons do not assemble otherwise than for the purpose of transacting business;• Any owner or operator who contravenes the above, is liable to have his exemption revoked.	<p>9am to 1pm 9am to 4pm</p>	<ul style="list-style-type: none">a. supporting automatic teller machines & card collection;b. facilitating internet banking, mobile banking & point of sale transactions;c. facilitating electronic payroll;d. facilitating wire transfers for essential services & international payments & clearings;e. facilitating local payment, clearing & other operations as required for the banking system;f. contact centres that facilitate payments;g. retail banking limited to cash & cheque transactions;h. persons signing up for internet & mobile banking;i. persons signing up for night deposits & collection services.



TYPE OF NON-ESSENTIAL SERVICE APPROVED TO OPERATE	APPROVED HOURS OF OPERATION	IMPORTANT NOTES
Beauty Supply Stores	8am to 4pm	
Bill Payment Services	8am to 6pm	Example: SurePay
Butchers' Shops	8am to 4pm	
Cleaning Services	6am to 6pm	That clean for essential services and approved non-essential services that may operate
Construction Projects and Allied Businesses	8am to 5pm	Allied businesses that provide support to or inputs into the construction sector, including hardware and building supplies businesses
Delivery Companies	8am to 4pm	
Delivery Services	8am to 4pm	For groceries and medical supplies

- All businesses shall follow strict distancing protocols for staff and customers;
- All businesses shall restrict the number of persons within or outside that establishment at any one time in order to ensure that a distance of at least 6 feet is maintained between every person and also ensure that persons do not assemble otherwise than for the purpose of transacting business;
- Any owner or operator who contravenes the above, is liable to have his exemption revoked.



TYPE OF NON-ESSENTIAL SERVICE APPROVED TO OPERATE	APPROVED HOURS OF OPERATION	IMPORTANT NOTES
Dry Cleaning and Laundry Services	8am to 4pm	
Farms	5am to 5pm	
Finance and Insurance Companies	8am to 4pm	
Food and Beverage Manufacturers, Wholesalers and Retailers	8am to 5pm	
Fuel Manufacturers, Fuel Storage Facilities and Fuel Distributors	7am to 5pm	

- All businesses shall follow strict distancing protocols for staff and customers;
- All businesses shall restrict the number of persons within or outside that establishment at any one time in order to ensure that a distance of at least 6 feet is maintained between every person and also ensure that persons do not assemble otherwise than for the purpose of transacting business;
- Any owner or operator who contravenes the above, is liable to have his exemption revoked.



TYPE OF NON-ESSENTIAL SERVICE APPROVED TO OPERATE	APPROVED HOURS OF OPERATION	IMPORTANT NOTES
Gasoline Stations	6am to 6pm	
Hardware Stores	8am to 5pm	
Hotels, Villas, and other Rental Accommodation, Restaurants	All Day	Excluding gaming rooms, spas, gyms and discotheques. Room service only
Information Technology Support Services	8am to 4pm	
Landscape, Gardening and Pool Services	8am to 4pm	

- All businesses shall follow strict distancing protocols for staff and customers;
- All businesses shall restrict the number of persons within or outside that establishment at any one time in order to ensure that a distance of at least 6 feet is maintained between every person and also ensure that persons do not assemble otherwise than for the purpose of transacting business;
- Any owner or operator who contravenes the above, is liable to have his exemption revoked.



TYPE OF NON-ESSENTIAL SERVICE APPROVED TO OPERATE	APPROVED HOURS OF OPERATION	IMPORTANT NOTES
Legal, Accounting and Other Professional Services	8am to 4pm	To support businesses
Manufacturing Companies	All Day	
Mining (quarrying) and Allied Services		Allied such as trucking and excavating as needed
Pet Shops and Pet Suppliers	8am to 4pm	

- All businesses shall follow strict distancing protocols for staff and customers;
- All businesses shall restrict the number of persons within or outside that establishment at any one time in order to ensure that a distance of at least 6 feet is maintained between every person and also ensure that persons do not assemble otherwise than for the purpose of transacting business;
- Any owner or operator who contravenes the above, is liable to have his exemption revoked.



TYPE OF NON-ESSENTIAL SERVICE APPROVED TO OPERATE	APPROVED HOURS OF OPERATION	IMPORTANT NOTES
Pharmaceutical Manufacturers, Manufacturers of Juices, Soft Drinks, and Dairy Products, Food Processors and Food Distributors	8am to 5pm	
Pharmacies	8am to 5pm	For personal shopping and the filling of prescriptions
Printing Supply Stores	8am to 4pm	
Private Veterinary Services	As needed	

- All businesses shall follow strict distancing protocols for staff and customers;
- All businesses shall restrict the number of persons within or outside that establishment at any one time in order to ensure that a distance of at least 6 feet is maintained between every person and also ensure that persons do not assemble otherwise than for the purpose of transacting business;
- Any owner or operator who contravenes the above, is liable to have his exemption revoked.



TYPE OF NON-ESSENTIAL SERVICE APPROVED TO OPERATE	APPROVED HOURS OF OPERATION	IMPORTANT NOTES
Property Management Services	8am to 4pm	
Public Markets including Fish Markets	8am to 4pm	Within the meaning of section 2 of the Markets and Slaughter-Houses Act, CAP. 265
Restaurants	All Day	For off-site delivery of food only
Retailers of Baby Products	8am to 4pm	
Safety Equipment Stores	8am to 4pm	
Sugar Factories	All Day	

- All businesses shall follow strict distancing protocols for staff and customers;
- All businesses shall restrict the number of persons within or outside that establishment at any one time in order to ensure that a distance of at least 6 feet is maintained between every person and also ensure that persons do not assemble otherwise than for the purpose of transacting business;
- Any owner or operator who contravenes the above, is liable to have his exemption revoked.



TYPE OF NON-ESSENTIAL SERVICE APPROVED TO OPERATE	APPROVED HOURS OF OPERATION	IMPORTANT NOTES
Supermarkets and Mini marts	7am to 5pm	
Tradesmen	As Needed	
Tyre Shops, Wrecker Services	As Needed	And emergency personnel for vehicle response only
Vendors	8am to 4pm	Includes wayside vendor for the sale of agricultural produce only
Vendors of Computers, Computer Supplies and Peripherals		Online only (delivery only)
Vendors of Fabric	8am to 4pm	For the sale of material for face masks only

- All businesses shall follow strict distancing protocols for staff and customers;
- All businesses shall restrict the number of persons within or outside that establishment at any one time in order to ensure that a distance of at least 6 feet is maintained between every person and also ensure that persons do not assemble otherwise than for the purpose of transacting business;
- Any owner or operator who contravenes the above, is liable to have his exemption revoked.



TYPE OF NON-ESSENTIAL SERVICE APPROVED TO OPERATE	APPROVED HOURS OF OPERATION	IMPORTANT NOTES
Vendors of Health and Wellness Supplies	8am to 5pm	
Vendors of Marine and Fishing Products	8am to 4pm	
Vendors of Office Equipment and Office Supplies	8am to 4pm	
Vendors of Security Products and Services	8am to 4pm	

- All businesses shall follow strict distancing protocols for staff and customers;
- All businesses shall restrict the number of persons within or outside that establishment at any one time in order to ensure that a distance of at least 6 feet is maintained between every person and also ensure that persons do not assemble otherwise than for the purpose of transacting business;
- Any owner or operator who contravenes the above, is liable to have his exemption revoked.



TYPE OF NON-ESSENTIAL SERVICE APPROVED TO OPERATE	APPROVED HOURS OF OPERATION	IMPORTANT NOTES
Vendors of Stationery and Education Supplies	8am to 4pm	But not bookstores
Village Shops	8am to 5pm	



- All businesses shall follow strict distancing protocols for staff and customers;
- All businesses shall restrict the number of persons within or outside that establishment at any one time in order to ensure that a distance of at least 6 feet is maintained between every person and also ensure that persons do not assemble otherwise than for the purpose of transacting business;
- Any owner or operator who contravenes the above, is liable to have his exemption revoked.



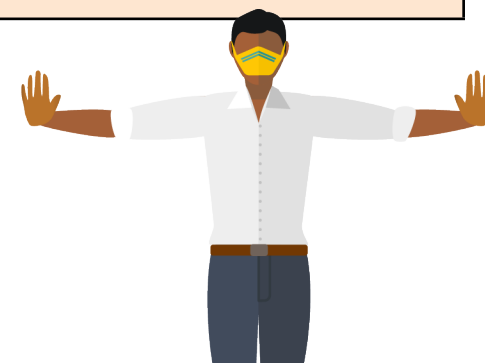
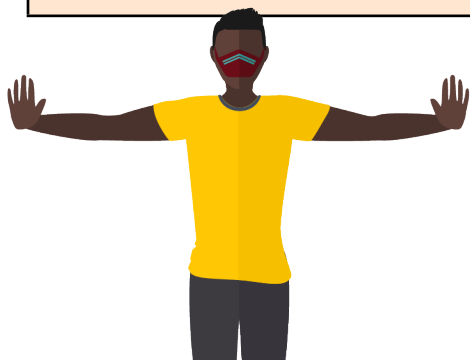
ESSENTIAL SERVICES

(See Clauses 2.2, 2.3, 2.4)

- The approved hours of operation are not to be mistaken as the approved hours to access these services.
- Residents are still required to observe the assigned days and time periods to leave their homes.
- All businesses shall follow strict distancing protocols for staff and customers;
- All businesses shall restrict the number of persons within or outside that establishment at any one time in order to ensure that a distance of at least 6 feet is maintained between every person and also ensure that persons do not assemble otherwise than for the purpose of transacting business;
- Any owner or operator who contravenes the above, is liable to have his exemption revoked.
- The following page is a list of essential services that may operate and their approved hours of operation.



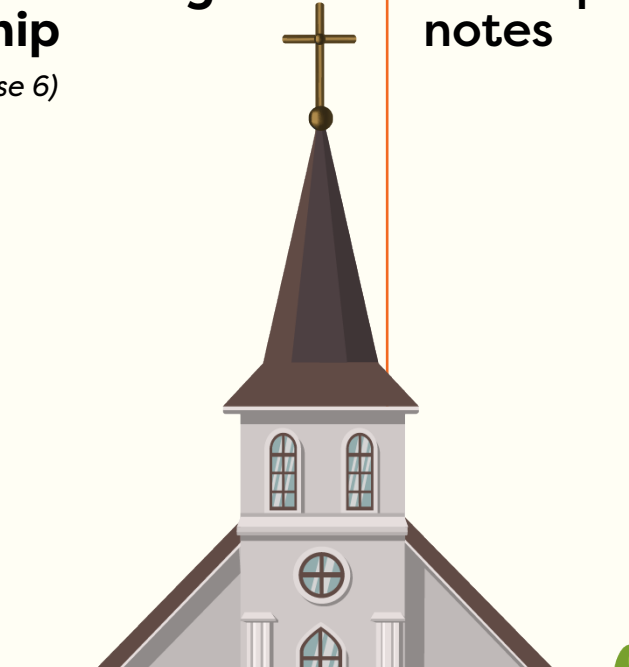
TYPE OF ESSENTIAL SERVICE APPROVED TO OPERATE	APPROVED HOURS OF OPERATION	IMPORTANT NOTES
The Public Service and Statutory Corporations	As and when required	Under the direction of the Head of the Public Service.
Ministry of Agriculture Plant Quarantine and Veterinary Services	As Needed	
Electricity Services	All Day	
Telecommunications	All Day	



- All businesses shall follow strict distancing protocols for staff and customers;
- All businesses shall restrict the number of persons within or outside that establishment at any one time in order to ensure that a distance of at least 6 feet is maintained between every person and also ensure that persons do not assemble otherwise than for the purpose of transacting business;
- Any owner or operator who contravenes the above, is liable to have his exemption revoked.



PLACES OF RELIGIOUS WORSHIP

TYPE OF SERVICE APPROVED TO OPERATE	APPROVED HOURS OF OPERATION	IMPORTANT NOTES
<p>Places of Religious Worship <i>(See Clause 6)</i></p> 	<p>See important notes</p>	<p>Only for the conduct of:</p> <p>FUNERALS: No more than 20 mourners, one officiant, the funeral director and the necessary staff shall attend a funeral.</p> <p>WEDDINGS: Only the bride, bridegroom, official witnesses and the marriage officer are permitted to assemble.</p> <p>THE STREAMING OF RELIGIOUS SERVICES: Only 10 persons including the officiant shall be physically present.</p>



BEACHES

TYPE OF SERVICE APPROVED TO OPERATE	APPROVED HOURS OF OPERATION	IMPORTANT NOTES
Beaches (See Clause 14)	6am to 9am	A physical distance of at least 6 feet shall be observed between individuals unless they are members of the same household. Parks shall remain closed.

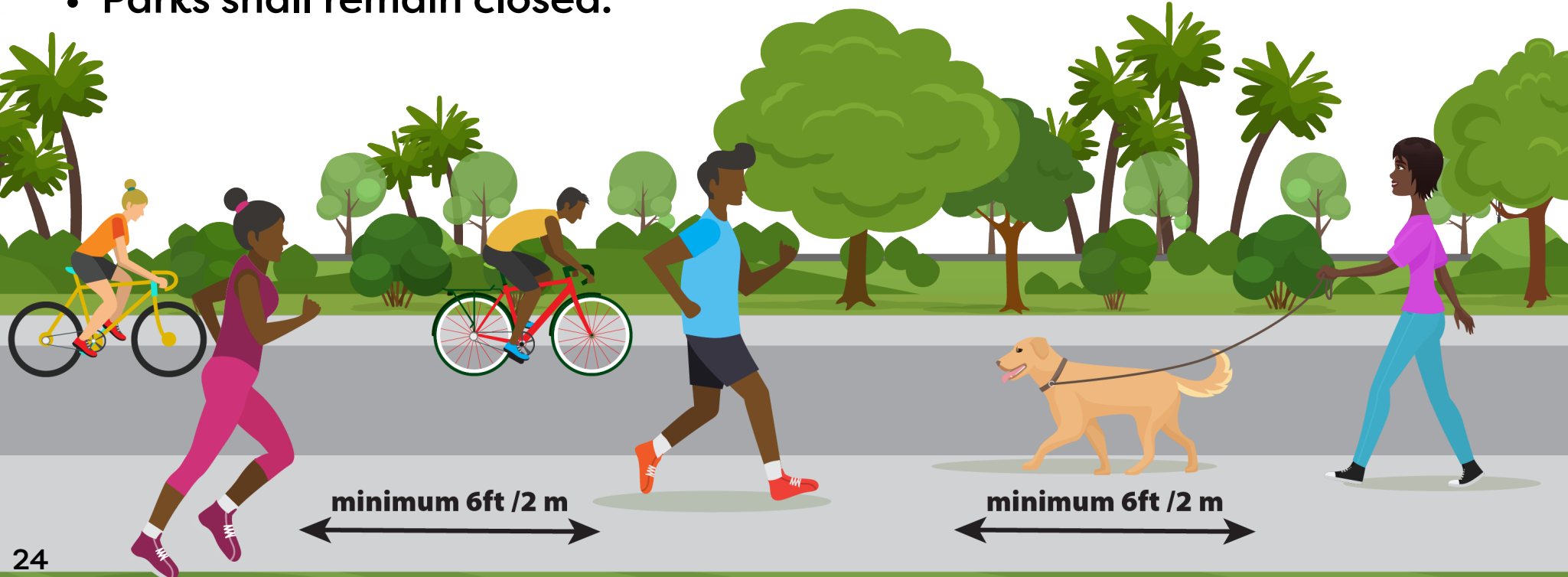




EXERCISE

(See Clauses 14, 21)

- No group exceeding 3 persons who are not members of the same household are permitted to exercise beyond the curtilage of their residence and they must adhere to physical distancing.
- Parks shall remain closed.





PUBLIC TRANSPORTATION

(See Clauses 7 & 8)

- All public service vehicles and motor omnibuses are limited to carrying 60% of their seating capacity.
- No two passengers shall be allowed to sit side by side.
- Drivers, conductors and passengers are required to wear face masks.
- Residents are still required to observe the assigned days and time periods to leave their homes.

All motor omnibuses and public service vehicles are required to be sanitized before and after boarding passengers at the following terminals:

- Oistins
- Princess Alice
- Fairchild Street
- Constitution Road
- Speightstown





SALE OF ALCOHOL

(See Clauses 15, 17)

- The sale of intoxicating liquor shall be permitted on licensed premises only, but consumption on such premises is prohibited. (For the avoidance of doubt Bars shall remain closed.)
- Residents are still required to observe the assigned days and time periods to leave their homes.





STANDARD RULES FOR EVERYONE

(See Clauses 9, 10, 11, 12, 13, 22)

- No private parties.
- No recreational or competitive sporting events.
- No banquets, balls or receptions
- No social events.
- No meetings of fraternal societies or private or social clubs or civic organizations.
- No visits to places of quarantine or isolation.
- No disclosing of identities of anyone who is in quarantine or isolation.
- No visits to prisons or Government Industrial School.
- No more than one person at any time shall visit a patient in a hospital, nursing home, senior citizens' home and facilities for the treatment of persons with addiction or a dependency on drugs or a narcotic substance.





RULES: GENERAL PUBLIC

(See Clauses 1, 17, 18, 19, 24)

- Residents are still required to observe the assigned days and time periods to leave their homes. No person shall leave his residence except where and when permitted.
- No person shall leave his residence without picture identification: either their Barbados Identification Card or driving license or passport.
- No more than 3 persons shall remain outdoors as a group unless they are members of the same household and are within the curtilage of a residence.
- No more than 5 members of the same household shall remain outdoors as a group except in the curtilage of their residence.





RULES: ESSENTIAL SERVICES

(See Clause 1)

- No person, except an employee or member of an essential service, shall leave his residence between 8:00 p.m. and 5:00 a.m. during Curfew.
- Essential Workers must always travel with work identification

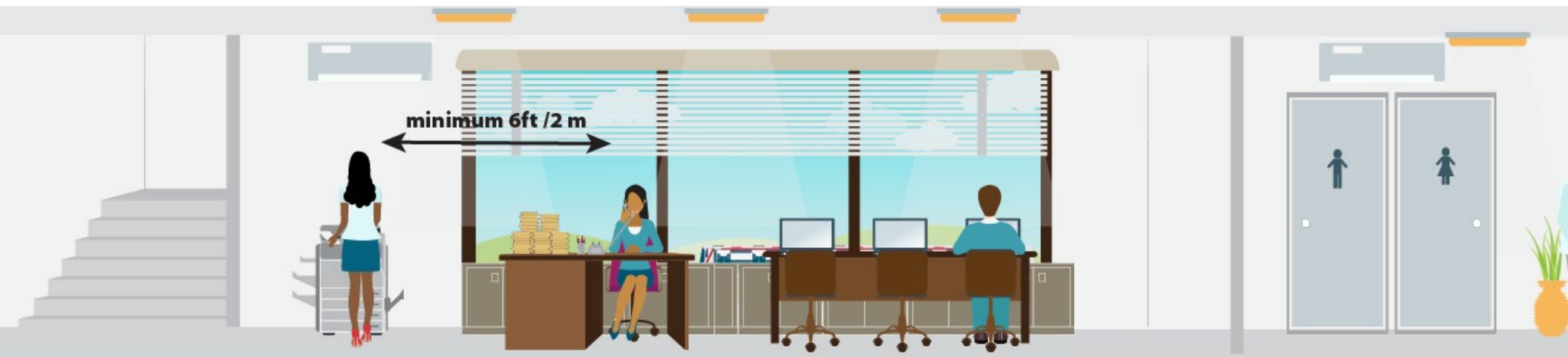




RULES: BUSINESSES & SERVICE PROVIDERS

(See Clauses 2, 5, 13)

- Every non-essential service shall remain closed except where and when permitted in the Curfew Directive Schedule.
- Private businesses and offices shall only operate where the employees can work exclusively from their homes.
- All businesses shall follow strict distancing protocols for staff and customers;
- All businesses shall restrict the number of persons within or outside that establishment at any one time in order to ensure that a distance of at least 6 feet is maintained between every person and also ensure that persons do not assemble otherwise than for the purpose of transacting business;
- Any owner or operator who contravenes the above, is liable to have his exemption revoked.





PENALTY

A person who contravenes this Directive without reasonable explanation, is guilty of an offence and is liable on summary conviction to a fine of \$50,000 or to imprisonment for a term of one year or to both pursuant to paragraph 15 (1) of the Emergency Management (COVID-19) Order, 2020.