



COVID-19

GOVERNMENT OF BARBADOS

EMERGENCY MANAGEMENT
(COVID-19) ORDER, 2020

DIRECTIVE 5

MAY 18 - 31

CURFEW: 8:00 P.M. TO 5:00 A.M. DAILY

16/05/2020



© Donna Redman Creative 2020





CONTENTS

| | |
|--|----|
| Standard Rules For Everyone | 3 |
| Rules: Essential Services | 4 |
| Rules: General Public | 5 |
| Rules: Businesses & Service Providers | 6 |
| Approved Places You May Go Irrespective Of The Alphabet System | 7 |
| The Alphabet System | 8 |
| Assigned Day: Banks & Credit Unions | 9 |
| Assigned Days: Supermarkets & Mini Marts Public Markets | |
| Fish Markets Hardware Stores & Retail Operators | 10 |
| Non-Essential Services | 11 |
| Additional Non-Essential Services | 24 |
| Essential Services | 25 |
| Places Of Religious Worship | 27 |
| Beaches | 28 |
| Public Transportation | 29 |
| Sale Of Alcohol | 30 |
| Exercise & Sports | 31 |
| Penalty | 38 |



STANDARD RULES FOR EVERYONE

(See Clauses 2, 13, 14, 15, 16, 28)

- Every person and business establishment shall comply with this Directive.
- No private parties.
- No recreational or competitive sporting events.
- No banquets, balls or receptions
- No social events.
- No meetings of fraternal societies or private or social clubs or civic organizations.
- No visits to places of quarantine or isolation.
- No transmission of video or audio recording any person or disclosing of identities of anyone who is in quarantine or isolation.
- No visits to prisons or Government Industrial School.
- No more than one person at any time shall visit a patient in a hospital, nursing home, senior citizens' home and facilities for the treatment of persons with addiction or a dependency on drugs or a narcotic substance.





RULES: ESSENTIAL SERVICES

(See Clause 1)

- No person, except an employee or member of an essential service, shall leave his residence between 8:00 p.m. and 5:00 a.m. during Curfew.
- Essential Workers must always travel with work identification





RULES: GENERAL PUBLIC

(See Clauses 1, 21, 22, 23, 29, 30, 31)

- ***Every person shall remain in the confines of his residence and its curtilage except where and when permitted.***
- Residents are still required to observe the assigned days to leave their homes.
- No more than 3 persons shall remain outdoors as a group unless they are members of the same household and are within the curtilage of a residence.
- No more than 5 members of the same household shall remain outdoors as a group except in the curtilage of their residence.

- No person shall leave his residence without picture identification: either their Barbados Identification Card or driving license or passport and shall present one when requested to do so by a person in authority.

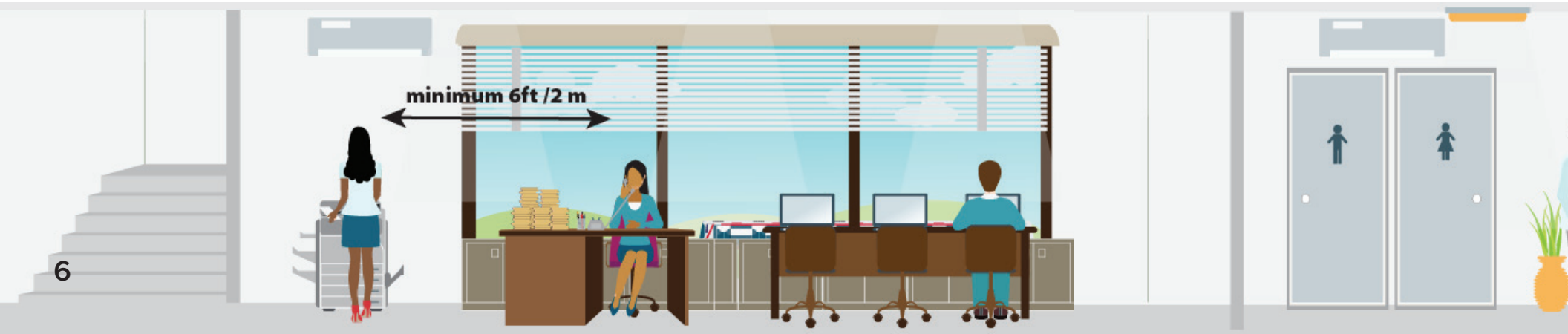




RULES: BUSINESSES & SERVICE PROVIDERS

(See Clauses 2, 5, 6, 17)

- Every non-essential service shall remain closed except where and when permitted in the Curfew Directive Schedule.
- Private businesses and offices shall only operate where the employees can work exclusively from their homes.
- All businesses shall follow strict distancing protocols for staff and customers.
- All businesses shall restrict the number of persons within or outside that establishment at any one time in order to ensure that a distance of at least 6 feet is maintained between every person and also ensure that persons do not assemble otherwise than for the purpose of transacting business.
- **Meetings** may be convened for the purpose of conducting business at which no more than 10 persons shall be present and physical distancing shall be observed.





APPROVED PLACES YOU MAY GO IRRESPECTIVE OF THE ALPHABET SYSTEM

(See Clause 20 & First Schedule)

- To purchase medical and pharmaceutical supplies and to have a prescription filled
- To seek medical, dental or ophthalmic attention
- To work in, or transact business with, an essential service or a business that is exempt from this directive.





THE ALPHABET SYSTEM

(See Clause 21 & First Schedule)

- The first letter of your surname associated with the assigned days to leave your residence still apply.
- The assigned days and alphabet system apply to every person.

IF YOU NEED TO GO TO ANY OF THESE PLACES:

- Bank
- Credit Union
- Public Market (for fruit, vegetables, fish and meat)
- Fish Market
- Hardware Store
- Retail Operator
- Supermarket
- Mini mart

You will need to go on your assigned day.

This does not apply to:

- *Village shops.*
- *The purchase of inputs for construction projects.*
- *Pharmacies.*





ASSIGNED DAY & TIME:

BANKS & CREDIT UNIONS: 9 am – 5 pm

(See Clauses 2, 6 & First Schedule)

| MONDAY | TUESDAY | WEDNESDAY | THURSDAY | FRIDAY |
|-------------------------------|------------------------|---|---|-------------------------------------|
| A - B G - H - I - J - K | SENIORS* & DISABLED | C - D - E - F S - T - U - V W - X - Y - Z | HEALTH CARE & OTHER ESSENTIAL WORKERS | A - B L - M - N - O P - Q - R |



***Senior Citizens:
70 years of age
or older**

- All businesses shall follow strict distancing protocols for staff and customers;
- All businesses shall restrict the number of persons within or outside that establishment at any one time in order to ensure that a distance of at least 6 feet is maintained between every person and also ensure that persons do not assemble otherwise than for the purpose of transacting business;
- Any owner or operator who contravenes the above, is liable to have his exemption revoked.



ASSIGNED DAYS & TIME:

Supermarkets & Mini Marts: 7 am - 5 pm

Public Markets & Fish Markets: 8 am - 4 pm

Retail Operators: 8 am - 4 pm

Hardware Stores: 8 am - 5 pm

(See Clauses 2, 6 & First Schedule)

| MONDAY | TUESDAY | WEDNESDAY | THURSDAY | FRIDAY | SATURDAY | SUNDAY |
|-------------------------------|---|---|---|---------------------------------------|---|--|
| A - B G - H - I - J - K | L - M - N - O - P - Q - R SENIORS & DISABLED | C - D - E - F S - T - U - V W - X - Y - Z | G - H - I - J - K HEALTH CARE & OTHER ESSENTIAL WORKERS | A - B L - M - N - O - P - Q - R | C - D - E - F S - T - U - V W - X - Y - Z | SENIORS & DISABLED HEALTH CARE & OTHER ESSENTIAL WORKERS |

- All businesses shall follow strict distancing protocols for staff and customers;
- All businesses shall restrict the number of persons within or outside that establishment at any one time in order to ensure that a distance of at least 6 feet is maintained between every person and also ensure that persons do not assemble otherwise than for the purpose of transacting business;
- Any owner or operator who contravenes the above, is liable to have his exemption revoked.



NON-ESSENTIAL SERVICES

(See Clauses 2, 5)

- **Every non-essential service shall remain closed, except those on the following pages, which may open only between the hours specified.**
- Access to these non-essential services is permitted using the assigned days and times.
- Residents are still required to observe the assigned days to leave their homes.
- The approved hours of operation are not to be mistaken as the approved hours to access these services.
- All businesses shall follow strict distancing protocols for staff and customers.
- All businesses shall restrict the number of persons within or outside that establishment at any one time in order to ensure that a distance of at least 6 feet is maintained between every person and also ensure that persons do not assemble otherwise than for the purpose of transacting business.
- Any owner or operator who contravenes the above, is liable to have his exemption revoked.





| TYPE OF NON-ESSENTIAL SERVICE APPROVED TO OPERATE | APPROVED HOURS OF OPERATION | IMPORTANT NOTES |
|---|-----------------------------|--|
| Appliance Stores | 8am to 4pm | For the sale, delivery and installation of appliances |
| Automarts | 6am to 6pm | No prepared food items shall be sold |
| Automotive Store and Workshops | 8am to 4pm | Vehicle repair, servicing, sale of spare parts for motor vehicles, motorcycles, and bicycles |
| Bakeries and Bread Depots | 8am to 6pm | For sale of bread |
| Bakeries | 6am to 6pm | For baking of bread |
| Banks and Credit Unions | 9am to 5pm | |

- All businesses shall follow strict distancing protocols for staff and customers;
- All businesses shall restrict the number of persons within or outside that establishment at any one time in order to ensure that a distance of at least 6 feet is maintained between every person and also ensure that persons do not assemble otherwise than for the purpose of transacting business;
- Any owner or operator who contravenes the above, is liable to have his exemption revoked.



| TYPE OF NON-ESSENTIAL SERVICE APPROVED TO OPERATE | APPROVED HOURS OF OPERATION | IMPORTANT NOTES |
|---|-----------------------------|--|
| Barber shops, Beauty Salons and Hairdressers excluding Cosmetologists | 8am to 5pm | All clients shall wear face masks, staff shall wear masks and face shields and all persons shall observe physical distancing |
| Beauty Supply Stores | 8am to 4pm | |
| Bill Payment Services | 8am to 6pm | Example: SurePay |
| Book Shops | 8am to 4pm | |
| Boat Yards | 8am to 5pm | For repair and maintenance of boats only |
| Butchers' Shops | 8am to 4pm | |

- All businesses shall follow strict distancing protocols for staff and customers;
- All businesses shall restrict the number of persons within or outside that establishment at any one time in order to ensure that a distance of at least 6 feet is maintained between every person and also ensure that persons do not assemble otherwise than for the purpose of transacting business;
- Any owner or operator who contravenes the above, is liable to have his exemption revoked.



| TYPE OF NON-ESSENTIAL SERVICE APPROVED TO OPERATE | APPROVED HOURS OF OPERATION | IMPORTANT NOTES |
|---|-----------------------------|---|
| Cleaning Services | 6am to 6pm | That clean for essential services and approved non-essential services that may operate |
| Construction Projects and Allied Businesses | 8am to 5pm | Allied businesses that provide support to or inputs into the construction sector, including hardware and building supplies businesses |
| Delivery Companies | 8am to 4pm | |
| Delivery Services | 8am to 4pm | For groceries and medical supplies |
| Department Stores | 8am to 5pm | The sale of apparel of any kind is prohibited and all changing rooms shall remain closed |

- All businesses shall follow strict distancing protocols for staff and customers;
- All businesses shall restrict the number of persons within or outside that establishment at any one time in order to ensure that a distance of at least 6 feet is maintained between every person and also ensure that persons do not assemble otherwise than for the purpose of transacting business;
- Any owner or operator who contravenes the above, is liable to have his exemption revoked.



| TYPE OF NON-ESSENTIAL SERVICE APPROVED TO OPERATE | APPROVED HOURS OF OPERATION | IMPORTANT NOTES |
|--|-----------------------------|-----------------|
| Dry Cleaning and Laundry Services | 8am to 4pm | |
| Farms | 5am to 5pm | |
| Finance and Insurance Companies | 8am to 4pm | |
| Flower Shops | 8am to 4pm | |
| Food and Beverage Manufacturers, Wholesalers and Retailers | 8am to 5pm | |

- All businesses shall follow strict distancing protocols for staff and customers;
- All businesses shall restrict the number of persons within or outside that establishment at any one time in order to ensure that a distance of at least 6 feet is maintained between every person and also ensure that persons do not assemble otherwise than for the purpose of transacting business;
- Any owner or operator who contravenes the above, is liable to have his exemption revoked.



| TYPE OF NON-ESSENTIAL SERVICE APPROVED TO OPERATE | APPROVED HOURS OF OPERATION | IMPORTANT NOTES |
|---|-----------------------------|-----------------|
| Fuel Manufacturers, Fuel Storage Facilities and Fuel Distributors | 7am to 5pm | |
| Gasoline Stations | 6am to 6pm | |
| Hardware Stores | 8am to 5pm | |
| Home Furnishing Stores | 8am to 4pm | |
| Houseware and Home Appliances Stores | 8am to 4pm | |

- All businesses shall follow strict distancing protocols for staff and customers;
- All businesses shall restrict the number of persons within or outside that establishment at any one time in order to ensure that a distance of at least 6 feet is maintained between every person and also ensure that persons do not assemble otherwise than for the purpose of transacting business;
- Any owner or operator who contravenes the above, is liable to have his exemption revoked.



| TYPE OF NON-ESSENTIAL SERVICE APPROVED TO OPERATE | APPROVED HOURS OF OPERATION | IMPORTANT NOTES |
|---|-----------------------------|--|
| Hotels, Villas, and other Rental Accommodation, Restaurants | All Day | Excluding gaming rooms, spas, gyms and discotheques. Room service only |
| Information Technology Support Services | 8am to 4pm | |
| Landscape, Gardening and Pool Services | 8am to 4pm | |
| Legal, Accounting and Other Professional Services | 8am to 4pm | To support businesses |

- All businesses shall follow strict distancing protocols for staff and customers;
- All businesses shall restrict the number of persons within or outside that establishment at any one time in order to ensure that a distance of at least 6 feet is maintained between every person and also ensure that persons do not assemble otherwise than for the purpose of transacting business;
- Any owner or operator who contravenes the above, is liable to have his exemption revoked.



| TYPE OF NON-ESSENTIAL SERVICE APPROVED TO OPERATE | APPROVED HOURS OF OPERATION | IMPORTANT NOTES |
|---|-----------------------------|--|
| Manicurist and Pedicurist | 8am to 5pm | All clients shall wear face masks, staff shall wear masks and face shields and all persons shall observe physical distancing |
| Manufacturing Companies | All Day | |
| Mining (quarrying) and Allied Services | | Allied such as trucking and excavating as needed |
| Motor Vehicle Showrooms | 8am to 4pm | For the sale of motor vehicles |
| Pet Shops and Pet Suppliers | 8am to 4pm | |
| Personal Care and Wellness Suppliers | 8am to 4pm | |

- All businesses shall follow strict distancing protocols for staff and customers;
- All businesses shall restrict the number of persons within or outside that establishment at any one time in order to ensure that a distance of at least 6 feet is maintained between every person and also ensure that persons do not assemble otherwise than for the purpose of transacting business;
- Any owner or operator who contravenes the above, is liable to have his exemption revoked.



| TYPE OF NON-ESSENTIAL SERVICE APPROVED TO OPERATE | APPROVED HOURS OF OPERATION | IMPORTANT NOTES |
|--|-----------------------------|--|
| Pharmaceutical Manufacturers, Manufacturers of Juices, Soft Drinks, and Dairy Products, Food Processors and Food Distributors | 8am to 5pm | |
| Pharmacies | 8am to 5pm | For personal shopping and the filling of prescriptions |
| Printing Supply Stores | 8am to 4pm | |
| Private Veterinary Services | As needed | |

- All businesses shall follow strict distancing protocols for staff and customers;
- All businesses shall restrict the number of persons within or outside that establishment at any one time in order to ensure that a distance of at least 6 feet is maintained between every person and also ensure that persons do not assemble otherwise than for the purpose of transacting business;
- Any owner or operator who contravenes the above, is liable to have his exemption revoked.



| TYPE OF NON-ESSENTIAL SERVICE APPROVED TO OPERATE | APPROVED HOURS OF OPERATION | IMPORTANT NOTES |
|---|-----------------------------|---|
| Property Management Services | 8am to 4pm | |
| Public Markets including Fish Markets | 8am to 4pm | Within the meaning of section 2 of the Markets and Slaughter-Houses Act, CAP. 265 |
| Restaurants | All Day | For drive through and pick-up of pre-ordered meals and off site delivery only |
| Retailers of Baby Products | 8am to 4pm | |
| Safety Equipment Stores | 8am to 4pm | |

- All businesses shall follow strict distancing protocols for staff and customers;
- All businesses shall restrict the number of persons within or outside that establishment at any one time in order to ensure that a distance of at least 6 feet is maintained between every person and also ensure that persons do not assemble otherwise than for the purpose of transacting business;
- Any owner or operator who contravenes the above, is liable to have his exemption revoked.



| TYPE OF NON-ESSENTIAL SERVICE APPROVED TO OPERATE | APPROVED HOURS OF OPERATION | IMPORTANT NOTES |
|---|-----------------------------|--|
| Sports Equipment and Sporting Goods Suppliers | 8am to 4pm | |
| Stores | 8am to 4pm | For the repair and servicing of televisions, fridges, air conditioners and other like appliances |
| Sugar Factories | All Day | |
| Supermarkets and Mini marts | 7am to 5pm | |
| Suppliers of Restaurant Equipment | | |
| Tradesmen | As Needed | |

- All businesses shall follow strict distancing protocols for staff and customers;
- All businesses shall restrict the number of persons within or outside that establishment at any one time in order to ensure that a distance of at least 6 feet is maintained between every person and also ensure that persons do not assemble otherwise than for the purpose of transacting business;
- Any owner or operator who contravenes the above, is liable to have his exemption revoked.



| TYPE OF NON-ESSENTIAL SERVICE APPROVED TO OPERATE | APPROVED HOURS OF OPERATION | IMPORTANT NOTES |
|---|-----------------------------|---|
| Tyre Shops, Wrecker Services | As Needed | And emergency personnel for vehicle response only |
| Vendors | 8am to 4pm | Includes wayside vendor for the sale of agricultural produce only |
| Vendors of Computers, Computer Supplies and Peripherals | | Online only (delivery only) |
| Vendors of Fabric | 8am to 4pm | For the sale of material for face masks only |
| Vendors of Health and Wellness Supplies | 8am to 5pm | |

- All businesses shall follow strict distancing protocols for staff and customers;
- All businesses shall restrict the number of persons within or outside that establishment at any one time in order to ensure that a distance of at least 6 feet is maintained between every person and also ensure that persons do not assemble otherwise than for the purpose of transacting business;
- Any owner or operator who contravenes the above, is liable to have his exemption revoked.



| TYPE OF NON-ESSENTIAL SERVICE APPROVED TO OPERATE | APPROVED HOURS OF OPERATION | IMPORTANT NOTES |
|---|-----------------------------|--------------------|
| Vendors of Marine and Fishing Products | 8am to 4pm | |
| Vendors of Office Equipment and Office Supplies | 8am to 4pm | |
| Vendors of Security Products and Services | 8am to 4pm | |
| Vendors of Stationery and Education Supplies | 8am to 4pm | But not bookstores |
| Village Shops | 8am to 5pm | |

- All businesses shall follow strict distancing protocols for staff and customers;
- All businesses shall restrict the number of persons within or outside that establishment at any one time in order to ensure that a distance of at least 6 feet is maintained between every person and also ensure that persons do not assemble otherwise than for the purpose of transacting business;
- Any owner or operator who contravenes the above, is liable to have his exemption revoked.



ADDITIONAL NON-ESSENTIAL SERVICES

(See Clauses 10, 11, 12)

- Cottage industries may re-open.
- Trade Unions may re-open.
- Domestic workers may return to work from 20th May, 2020 but they shall wear face mask and observe physical distancing whilst at work.



- All businesses shall follow strict distancing protocols for staff and customers;
- All businesses shall restrict the number of persons within or outside that establishment at any one time in order to ensure that a distance of at least 6 feet is maintained between every person and also ensure that persons do not assemble otherwise than for the purpose of transacting business;
- Any owner or operator who contravenes the above, is liable to have his exemption revoked.



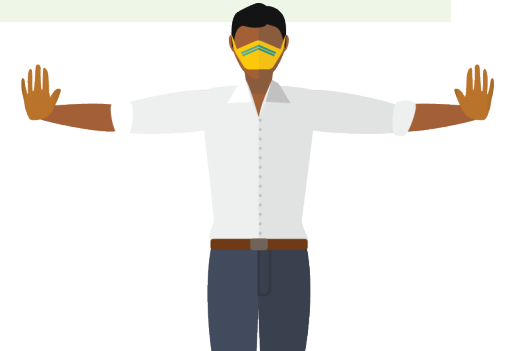
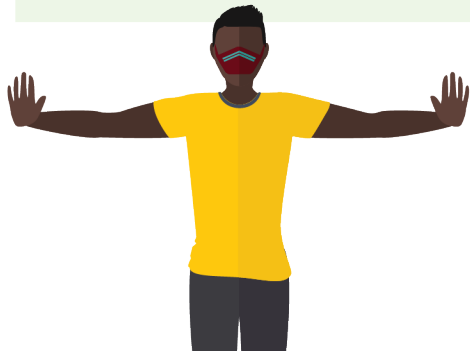
ESSENTIAL SERVICES

(See Clauses 2, 3, 4)

- **Access to essential services is permitted using the assigned days and times. A list of essential services is on the following page.**
- Residents are still required to observe the assigned days to leave their homes.
- The approved hours of operation are not to be mistaken as the approved hours to access these services.
- All businesses shall follow strict distancing protocols for staff and customers;
- All businesses shall restrict the number of persons within or outside that establishment at any one time in order to ensure that a distance of at least 6 feet is maintained between every person and also ensure that persons do not assemble otherwise than for the purpose of transacting business;
- Any owner or operator who contravenes the above, is liable to have his exemption revoked.



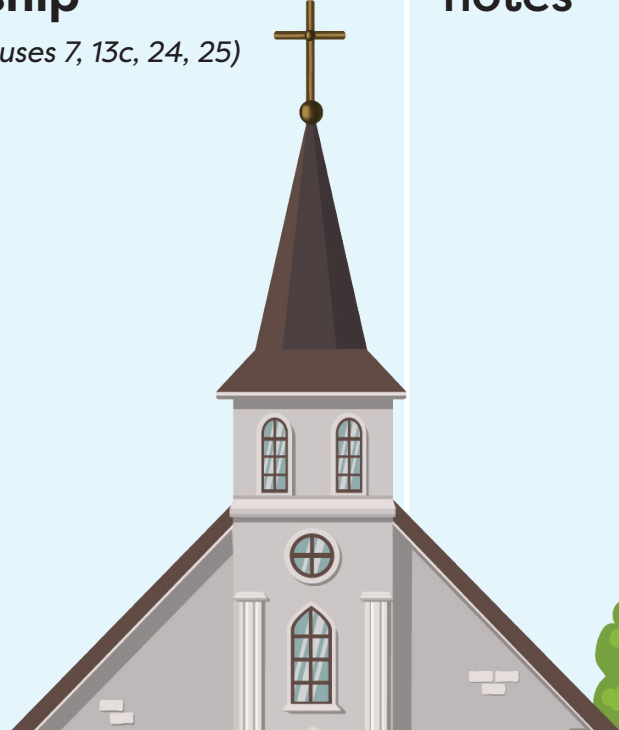
| TYPE OF ESSENTIAL SERVICE APPROVED TO OPERATE | APPROVED HOURS OF OPERATION | IMPORTANT NOTES |
|--|-----------------------------|--|
| The Public Service and Statutory Corporations | As and when required | Under the direction of the Head of the Public Service. |
| Ministry of Agriculture Plant Quarantine and Veterinary Services | As Needed | |
| Electricity Services | All Day | |
| Telecommunications | All Day | |



- All businesses shall follow strict distancing protocols for staff and customers;
- All businesses shall restrict the number of persons within or outside that establishment at any one time in order to ensure that a distance of at least 6 feet is maintained between every person and also ensure that persons do not assemble otherwise than for the purpose of transacting business;
- Any owner or operator who contravenes the above, is liable to have his exemption revoked.



PLACES OF RELIGIOUS WORSHIP

| TYPE OF SERVICE APPROVED TO OPERATE | APPROVED HOURS OF OPERATION | IMPORTANT NOTES |
|--|-----------------------------|--|
| <p>Places of Religious Worship <i>(See Clauses 7, 13c, 24, 25)</i></p>  | <p>See important notes</p> | <p>Only for the conduct of:</p> <p>FUNERALS: No more than 20 mourners, one officiant and the funeral director and the necessary staff shall attend a funeral.</p> <p>WEDDINGS: A wedding party shall comprise no more than 20 persons including the bride, the bridegroom, 2 witnesses and the marriage officer. No person shall host or attend a reception.</p> <p>THE STREAMING OF RELIGIOUS SERVICES: Only 20 persons including the officiant shall be physically present.</p> |



BEACHES

| TYPE OF SERVICE APPROVED TO OPERATE | APPROVED HOURS OF OPERATION | IMPORTANT NOTES |
|--|--|--|
| <p>Beaches <i>(See Clause 18)</i></p> | <p>6am to 9am and 4pm to 6:30 pm</p> | <p>A physical distance of at least 6 feet shall be observed between individuals unless they are members of the same household.</p> <p>Parks shall remain closed.</p> |





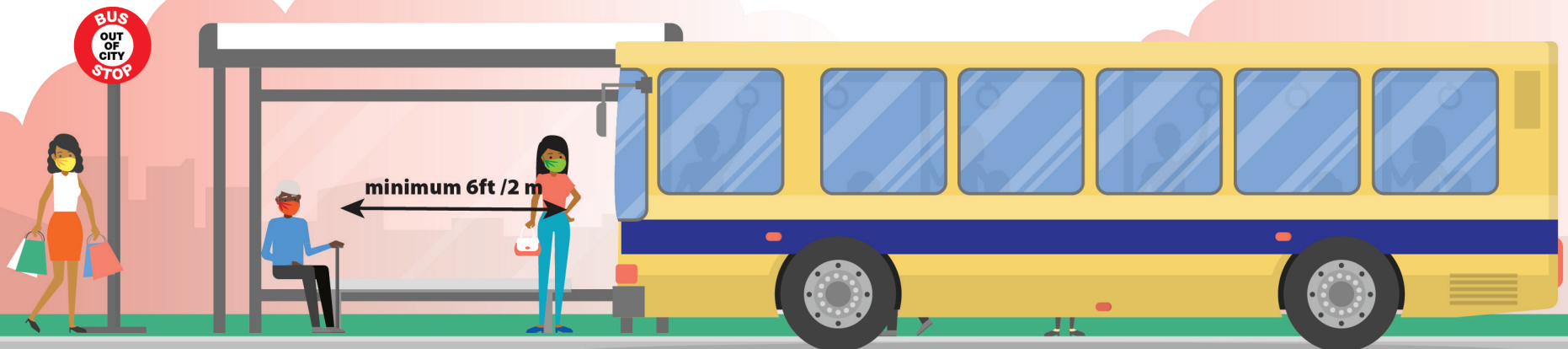
PUBLIC TRANSPORTATION

(See Clauses 8 & 9)

- All public service vehicles and motor omnibuses are limited to carrying 60% of their seating capacity.
- No two passengers shall be allowed to sit side by side.
- Drivers, conductors and passengers are required to wear face masks.
- Residents are still required to observe the assigned days and time periods to leave their homes.

All motor omnibuses and public service vehicles are required to be sanitized before and after boarding passengers at the following terminals:

- Oistins
- Princess Alice
- Fairchild Street
- Constitution Road
- Speightstown





SALE OF ALCOHOL

(See Clauses 15, 17)

- The sale of intoxicating liquor shall be permitted on licensed premises only, but consumption on such premises is prohibited. (For the avoidance of doubt Bars shall remain closed.)
- Residents are still required to observe the assigned days and time periods to leave their homes.



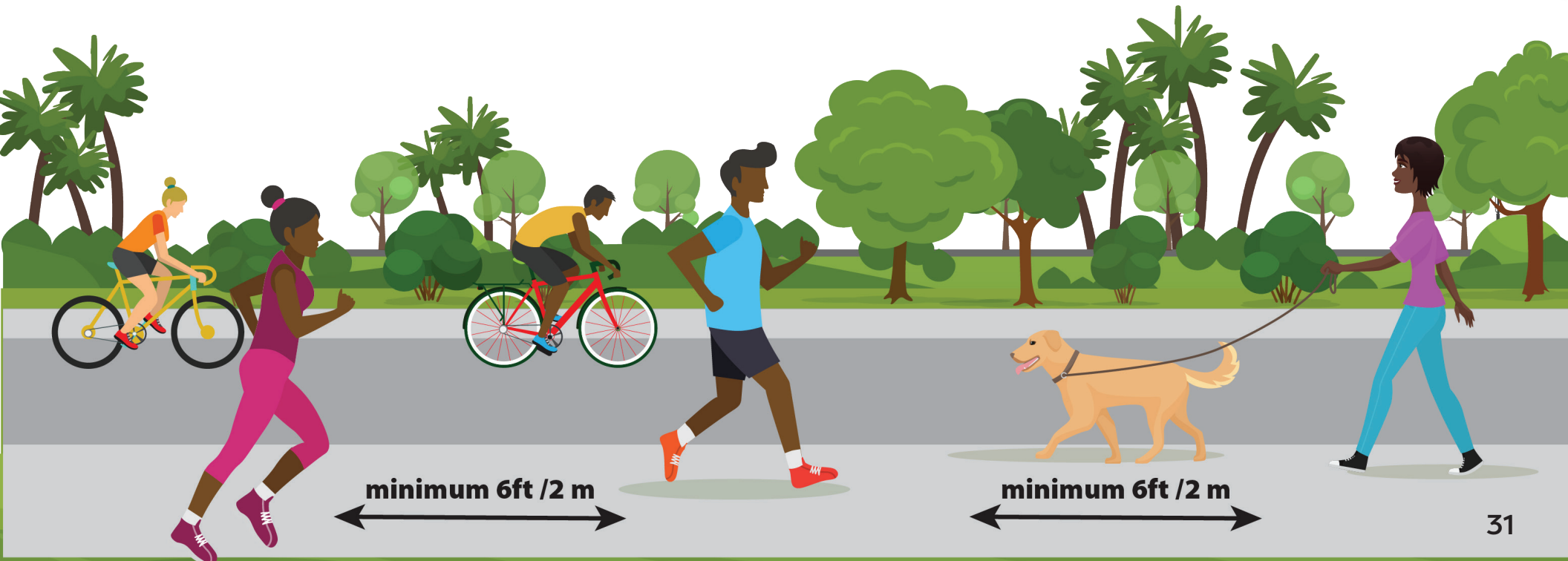


EXERCISE & SPORTS

(See Clauses 18, 26, 27, Second Schedule)

- No group exceeding 3 persons who are not members of the same household are permitted to exercise beyond the curtilage of their residence and they must adhere to physical distancing.
- Parks shall remain closed.

- **Persons may engage in recreational and sport activity under the conditions and protocols specified on the following pages.**
- **Examples for all sports - general fitness aerobic and anaerobic (e.g. running, cycling, sprints, hills).**





EXERCISE & SPORTS:

ACTIVITY PROTOCOL FOR SPORTS

(See Clause 27 & Second Schedule)

- Activity that can be conducted by a solo athlete or by pairs where at least 1.5m can always be maintained between participants. No contact between athletes and/or other personnel.
- Strength and sport-specific training permitted if no equipment required, or have access to own equipment (e.g. ergometer, weights).
- Online coaching and resources (e.g. videos, play books).
- No sharing of exercise equipment or communal facilities.
- Apply personal hygiene measures even when training away from group facilities - Strict hand hygiene (hand sanitisers, wash hands with soap) before, during and after training.
- Do not share drink bottles or towels.
- Do not attend training if unwell (contact doctor).
- Spitting and clearing of nasal/respiratory secretions on ovals or other sport settings must be strongly discouraged.
- No spectators. However, a parent or care giver may attend if required.



| SPORTS | CONDITIONS FOR ENGAGING IN ACTIVITIES |
|------------|---|
| Archery | Outdoor range and solo only. |
| Athletics | Outdoor training sessions on own, with coach, or with 1 training partner and no sharing of equipment (e.g. javelin, discus, high-jump mats, pole vault, shot put, hammer, starting blocks). |
| Badminton | Running/aerobic/agility training (solo), resistance training (solo), skills training (solo) at home or outdoor (no indoor sporting facility access allowed). |
| Boxing | Running/aerobic/agility training (solo), resistance training (solo), technical training (solo). Bag work if access to own equipment, without anyone else present. |
| Cricket | Running/aerobic training (solo), resistance training (solo), skills training (solo). |
| Cycling | Solo outdoor cycling or trainer, resistance training (solo). |
| Equestrian | Solo/pairs training only. |



| SPORTS | CONDITIONS FOR ENGAGING IN ACTIVITIES |
|--------------|---|
| Fencing | Running/aerobic/agility training (solo), resistance training (solo), skills training (solo). No bouts with others. Solo footwork practice (steps, lunges, fleshes). Pointwork - using cushion/board to practice fine motor skills of point work with sword. |
| Field Hockey | Running/aerobic/agility training (solo), resistance training (solo), skills training (solo) if access to appropriate surface available. |
| Golf | Maximum of 3 golfers per confirmed tee time. Each golfer uses a golf buggy. Family members may share a golf buggy. No touching of or removing of the flag stick. Maintain social distancing between players. |
| Gymnastics | Resistance training, skills training solo and outside of gym only. Rhythmic - skills at home. Trampoline - off apparatus skills, drills at home only. |



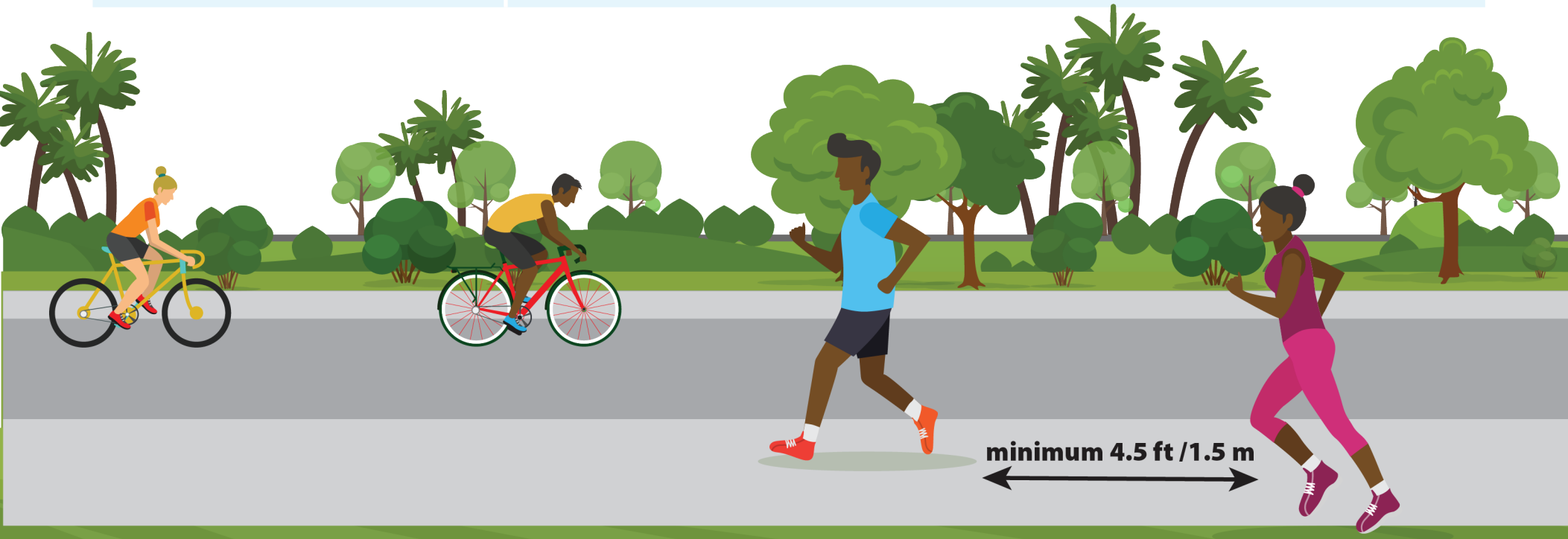
| SPORTS | CONDITIONS FOR ENGAGING IN ACTIVITIES |
|----------------------|--|
| Judo | Running/aerobic/agility training (solo), resistance training (solo), technical training (solo) - (e.g. mirror work). |
| Martial Arts | Running/aerobic/agility training (solo), resistance training (solo), technical training (solo) - (e.g. mirror work). |
| Motors Sports | Running/aerobic training (solo), resistance training (solo), simulation work at home if available. |
| Netball | Running/aerobic/agility training (solo), resistance training (solo), skills training (solo), including shooting (outdoor or own ring only) or ball skills (e.g. against a wall to self). |
| Road Tennis | Running/aerobic/agility training (solo), resistance training (solo), skills training (solo) at home or outdoor. For singles play, road tennis balls must be sanitized prior to play. |
| Rugby | Running/aerobic/agility training (solo), resistance training (solo), skills training (solo) including kicking, passing, ball skills (e.g. against wall to self). |



| SPORTS | CONDITIONS FOR ENGAGING IN ACTIVITIES |
|----------------------|---|
| Sailing | Solo sailing. |
| Shooting | Training on an outdoor field of play and an indoor firing line for up to two people, while observing appropriate social distancing practices. |
| Skateboarding | Outdoor and solo only, or indoor only if have own facilities. |
| Squash | Solo training drills only - running/aerobic/ agility training, resistance training, skills training at home, outdoor or closed courts (not open to others). |
| Surfing | Solo or with 1 training partner only. |
| Swimming | In-water training (solo) in own pool or open-water. |
| Table Tennis | Running/aerobic/agility training (solo), resistance training (solo), skills training (solo) at home or outdoor (no indoor sporting facility access allowed). |
| Tennis | Running/aerobic/agility, resistance, and skills training (solo) - (e.g. serving only, hitting with ball machine). For singles play, tennis balls must be sanitized prior to play. |



| SPORTS | CONDITIONS FOR ENGAGING IN ACTIVITIES |
|---------------|--|
| Volleyball | Running/aerobic/agility training (solo), resistance training (solo), skills training (solo) at home or outdoor (no indoor sporting facility access allowed). |
| Water Polo | In-water training (solo) if access to own pool only, or open-water. |
| Weightlifting | Resistance training, technical work at home (no indoor sporting facility/gym access allowed). |
| Wrestling | Running/aerobic/agility training (solo), resistance training (solo), technical training (solo). |





PENALTY

A person who contravenes this Directive without reasonable explanation, is guilty of an offence and is liable on summary conviction to a fine of \$50,000 or to imprisonment for a term of one year or to both pursuant to paragraph 15 (1) of the Emergency Management (COVID-19) Order, 2020.