



COVID-19
GOVERNMENT OF BARBADOS

EMERGENCY MANAGEMENT (COVID-19) ORDER, 2020

PUBLIC SERVICE VEHICLES

29/05/2020



© Donna Redman Creative 2020



This Directive applies to all Public Service Vehicles (PSVs): motor omnibuses, minibuses and route taxis; maxi taxis and tour coaches as PSVs.

Effective June 1 - 30, 2020.

All PSVs shall comply with the protocols specified on the following pages.

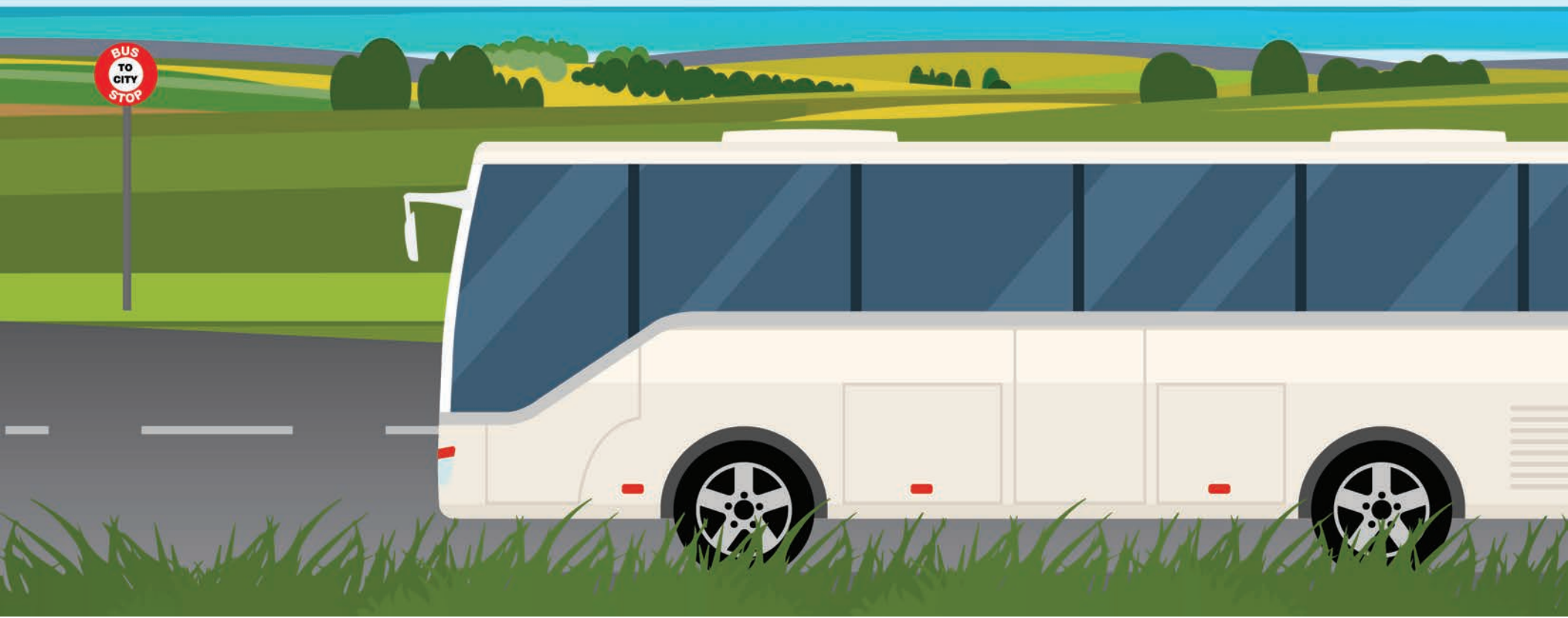
For the purposes of this Directive,

- a. “Transport Authority” means the Transport Authority established by the Transport Authority Act, Cap. 295A;
- a. “Maxi taxi” and “tour coach” have the meanings assigned to them by section 2(1) of the Road Traffic Act, Cap. 295; and
- a. The motor omnibus terminals listed have the meaning assigned to them by the Motor Omnibus Terminals Regulations, 1986 (S.I. 1986 No. 131).



TRANSPORT AUGMENTATION

The Prime Minister of Barbados has designated that the permit holders of maxi taxis and tour coaches which are parties to the Agreement known as “The Transport Augmentation Project” (TAP), shall transport passengers to and from their destinations in a safe, efficient and hygienic manner and comply with the protocols specified on the following pages.





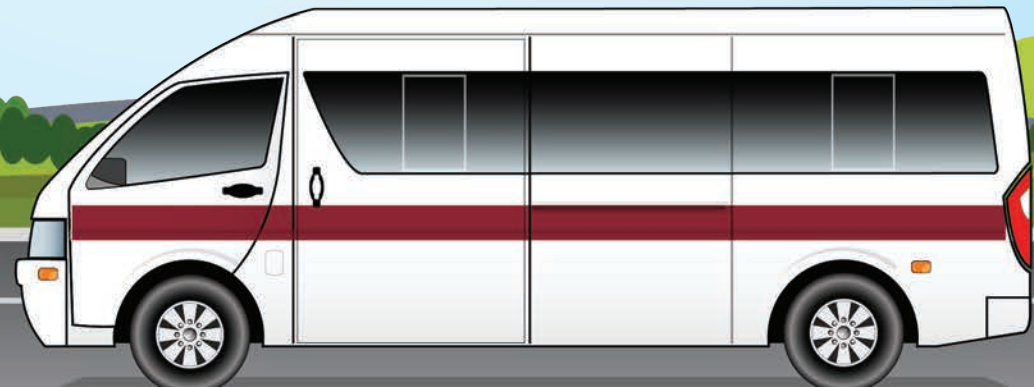
MAXI TAXIS & TOUR COACHES AS PSVs

As if they were registered and licensed as motor omnibuses, minibuses or route taxis the TAP maxi taxis and tour coaches are authorised to:

- a. Ply for hire on the same terms and subject to the same;
- b. Conditions as motor omnibuses, minibuses and route taxis;
- c. Pick up and set down passengers at bus stops;
- d. Charge each passenger the prescribed fare; and

e. Enter and make use of

- i. the Constitution River Motor Omnibus Terminal;
- ii. the Fairchild Street Motor Omnibus Terminal;
- iii. the Princess Alice Motor Omnibus Terminal; and
- iv. the Speightstown Motor Omnibus Terminal,





ALL PUBLIC SERVICE VEHICLES

- All public service vehicles: motor omnibus, minibus, route taxi, TAP maxi taxi and tour coach, are limited to carrying 60% of their seating capacity.
- No two passengers shall be allowed to sit side by side.
- Where vehicles are fitted with bench seats, only one person shall sit on a seat;
- Where vehicles are fitted bucket seats, only one person shall sit in a row of seats;
- Drivers, conductors and passengers are required to wear face masks.





ALL PUBLIC SERVICE VEHICLES

All public service vehicles: motor omnibus, minibus, route taxi, TAP maxi taxi and tour coach, shall be sanitized after putting down passengers and before taking up new passengers at the following terminals:

- the Constitution River Motor Omnibus Terminal;
- the Fairchild Street Motor Omnibus Terminal;
- the Princess Alice Motor Omnibus Terminal; and
- the Speightstown Motor Omnibus Terminal,





PENALTY

A permit holder referred to on page 3 who breaches the TAP Agreement aforementioned is liable to have the authority conferred on him by rescinded.

Any person who contravenes this Directive is guilty of an offence and is liable on summary conviction to a fine of \$50 000 or imprisonment for one year or to both.



HOW TO WASH YOUR HANDS

1. WET HANDS



2. USE SOAP



3. RUB PALM TO PALM



4. BACK OF HANDS



5. FINGERS INTERLACED



6. RUB FINGERNAILS



7. BASE OF THUMBS



8. RUB WRISTS



9. RINSE HANDS



10. DRY HANDS



11. TURN OFF TAP WITH TOWEL



12. DISPOSE TOWEL





HOW TO PUT ON A CLOTH MASK



Clean your hands with soap and water or hand sanitizer before touching the mask.

Face Masks with Ear Loops:
Hold the mask by the ear loops.

Bring the mask to your nose level and place a loop around each ear.



Face Masks with Bands:

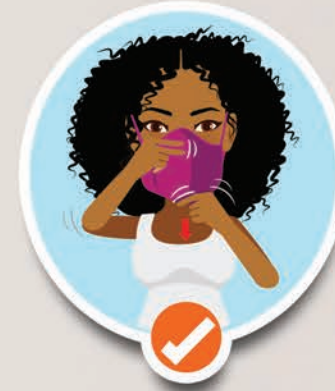
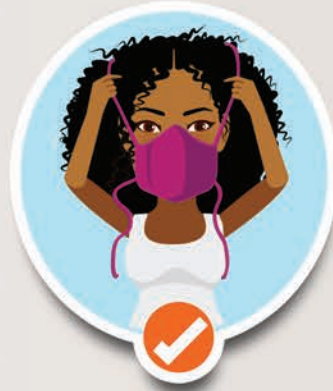
Bring the mask to your nose level and pull the top strap over your head so that it rests over the crown of your head.

Pull the bottom strap over your head so that it rests at the nape of your neck.

Face Mask with Ties:

Place the ties over the crown of your head and secure with a bow.

Secure the bottom ties with a bow at the nape of your neck.



Ensure the mask covers your nose, then pull the bottom of the mask over your mouth and chin.

Make sure you can breathe through the cloth face mask.

Remember to maintain 6ft/2m physical distance from others.



DONNA REDMAN CREATIVE & ACUTE VISION INC

Cloth Masks offer limited protection, you must continue to: Stay at home as your curfew directs • Maintain 6ft/2m physical distance from others • Wash your hands with soap & water or use hand sanitizer for at least 20 seconds • Do not touch your face • Practise good respiratory hygiene.

IF YOU HAVE ANY QUESTIONS, CALL THE COVID-19 HOTLINE 536-4500



HOW TO TAKE OFF A CLOTH MASK



Be careful not to touch your eyes, nose and mouth when removing your mask.

Avoid touching the front of the mask.

The front and inside of the mask are contaminated.

Only touch the ear loops/ties/band.



Face Masks with Ear Loops:
Hold both of the ear loops and gently lift and remove the mask.

Face Masks with Ties:
Untie the bottom bow first then untie the top bow and pull the mask away from your face as the ties are loosened.

Face Masks with Bands:
Lift the bottom strap over your head first then pull the top strap over your head and away from your face.



Place the used mask in a resealable plastic bag.
Wash your face soap and water or use face wipes
Clean your hands with soap and water or hand sanitizer.
Wash and sanitize used masks.

Keep clean masks in one bag and used masks in another bag.

Cloth Masks offer limited protection, you must continue to: Stay at home as your curfew directs • Maintain 6ft/2m physical distance from others • Wash your hands with soap & water or use hand sanitizer for at least 20 seconds • Do not touch your face • Practise good respiratory hygiene.

IF YOU HAVE ANY QUESTIONS, CALL THE COVID-19 HOTLINE 536-4500



HOW NOT TO WEAR A CLOTH MASK

IF YOU'RE GOING TO WEAR A CLOTH FACE COVERING, LEAVE IT ON. DON'T PULL IT UP OR DOWN



DON'T: Wear below your nose.



DON'T: Leave your chin exposed.



DON'T: Push to rest on top of your head.



DON'T: Cover just the tip of your nose.



DON'T: Push under your chin.



DON'T: Wear loosely with gaps.

DO: Wear your mask so the top comes close to the bridge of your nose and the bottom is under your chin.
Tighten the loops or ties so it's snug around your face without gaps.

Always wash your hands before and after wearing a cloth face covering.



IF YOU HAVE ANY QUESTIONS, CALL THE COVID-19 HOTLINE 536-4500

Cloth Masks offer limited protection, you must continue to: Stay at home as your curfew directs • Maintain 6ft/2m physical distance from others • Wash your hands with soap & water or use hand sanitizer for at least 20 seconds • Do not touch your face • Practise good respiratory hygiene.



CARING FOR YOUR CLOTH MASK




How long should I wear a cloth mask?

Cloth masks should be changed after every 2-hours of use or as soon as they become damp.

Carry two resealable plastic bags. Keep clean masks in one bag and used masks in the other bag.

After you remove the used mask and bag it, wash or sanitize your hands.



HOW do I clean & sanitize a cloth mask?

Wash in a utensil with hot soapy water for 30 mins.

You may use a washing machine.

When dry, store in a resealable plastic bag.

Wash the cleaning utensil carefully after use as dye or other chemicals may leak from the fabric.

Wash or sanitize your hands immediately after touching used masks and before touching clean masks.

Cloth Masks offer limited protection, you must continue to: Stay at home as your curfew directs • Maintain 6ft/2m physical distance from others • Wash your hands with soap & water or use hand sanitizer for at least 20 seconds • Do not touch your face • Practise good respiratory hygiene.

IF YOU HAVE ANY QUESTIONS, CALL THE COVID-19 HOTLINE 536-4500